



Est 1974
The Lodge

AT GULF STATE PARK
A Hilton Hotel

The New Lodge at Gulf State Park is a model of resilient, environmentally-friendly coastal development where connectivity to the outdoors is a central focus. An active lifestyle, access to nature and environmental restoration all play a large part in the character of the Lodge experience. The Lodge is located on the sugar white sand beaches and emerald green water of the Gulf of Mexico.

Gulf State Park is an international benchmark for economic and environmental sustainability demonstrating best practices for outdoor recreation, education and hospitable accommodations. Gulf State Park stands out from other Gulf Coast destinations because of its size and the diversity of its preserved ecosystems; there's simply nowhere else like it on the Gulf Coast.

Lodge Information

- Designed to meet LEED® Gold and SITES® Platinum Certifications along with FORTIFIED Commercial™ superior construction standards
- 350 guest rooms including 20 suites
- 40,000 sq. ft. of flexible indoor and outdoor event space
- The largest Beach View Ballroom on the Gulf Coast accommodating groups up to 1,000 guests and featuring a 7,100 sq. ft. outdoor terrace area
- Several outdoor gathering, dining, reception, and flexible hospitality areas
- Gulf front pool
- Pool bar and pool grille with terrace seating
- State-of-the-art fitness center
- Gulf front restaurant and bar with outdoor terrace seating and private dining room featuring house prepared & locally sourced regional specialties
- Coffee and Wine Bar & Porch



21196 East Beach Blvd. Gulf Shores, AL 36542
info@lodgesp.com

The Lodge at Gulf State Park, A Hilton Hotel, offers 40,000 sq. ft. of flexible indoor and outdoor event space along with several outdoor gathering and reception areas. Additionally, the Lodge naturalist will connect with the on-site meeting coordinator to educate attendees on the Lodge and Parks natural resources and sustainability practices. We also offer various team building, volunteer and social responsibility opportunities for your conference.



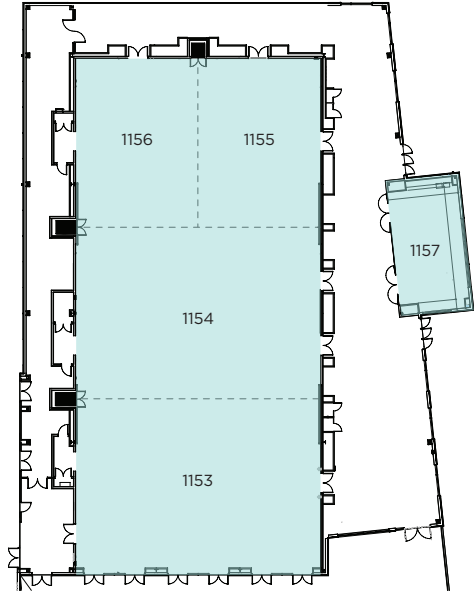
Park Activities & Recreation

- 6,150 acres of pristine coastal scenery and wildlife habitat
- Over 27.4 miles of hiking trails with all trails accessible to a variety of users
- 900 acre freshwater fishing lake with 6 piers
- 496 RV Camping sites, 20 cabins and 11 cottages
- A Nature Center outdoor classroom and amphitheater
- Interpretive Center teaches visitors about the dune ecosystems and environmentally friendly architecture. Exhibits include interactive displays and boardwalks to engage visitors with a variety of educational programming
- Fishing pier stretching over a 1/4 mile into the gulf and features educational signs about local wildlife
- Tennis, biking, kayaking, paddleboards, geocaching, guided nature walks, birding, several playgrounds and picnic areas, butterfly garden and pavilion

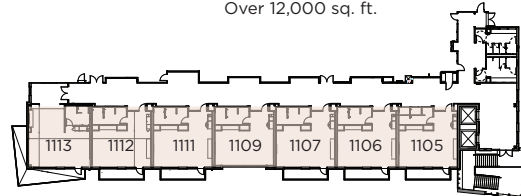
Nearby Attractions

- Coastal Segway Adventures
- Several world-class golf courses
- The Wharf at Orange Beach offers shopping, dining, concert amphitheater, mini golf, zip lining, marina and several entertainment venues
- Tanger Outlets Foley
- Alabama Gulf Coast Zoo
- Waterville USA, water and amusement park
- Bon Secour National Wildlife Refuge
- Flora-Bama offers a dining, shopping, marina and music venue
- OWA Theme Park
- The Coastal Arts Center of Orange Beach

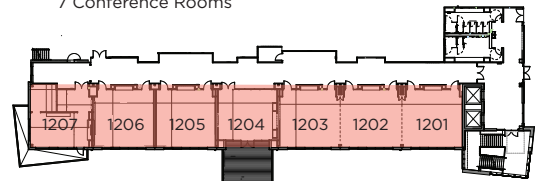
Floorplans



Main Ballroom
Over 12,000 sq. ft.



7 Conference Rooms



7 Meeting Suites

	AREA, SF	L	W	BANQ	CLRM
Ballroom (Total)	12,160	76	160	1000	500
NW Salon 1156	1,976	38	52	164	82
NE Salon 1155	1,976	38	52	164	82
Center Salon 1154	4,104	76	54	341	171
South Salon 1153	4,104	76	54	341	171
Ballroom Pre-Function	5,082			423	212
Flex Space 1	902	41	22	75	38
Conference Rm. 1105-1113	716 ea.	27	26.5	60	30
Conference Rm. 1105-1107	2,226 total	84	26.5	185	93
Board Rm.	432	27	16	36	18
Flex Space 2	635	27	23.5	53	26
Mtg. Ste. A (1-6)	459	27	17	38	19
Mtg. Ste. B (7)	672	28	24	56	28
Hospitality Ste.	1,040	40	26	87	43